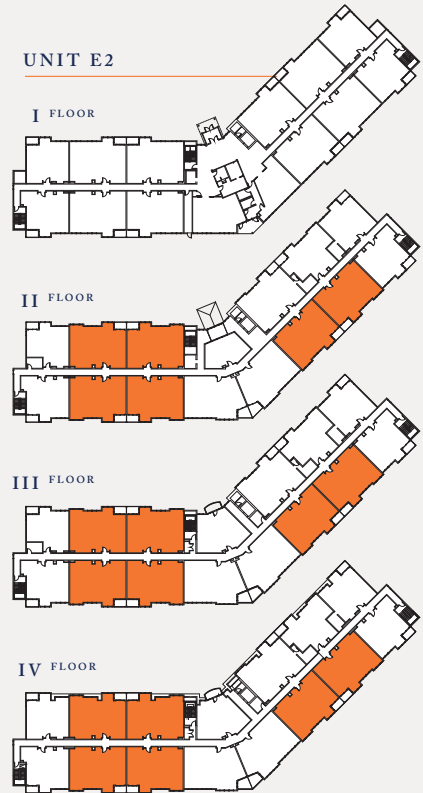
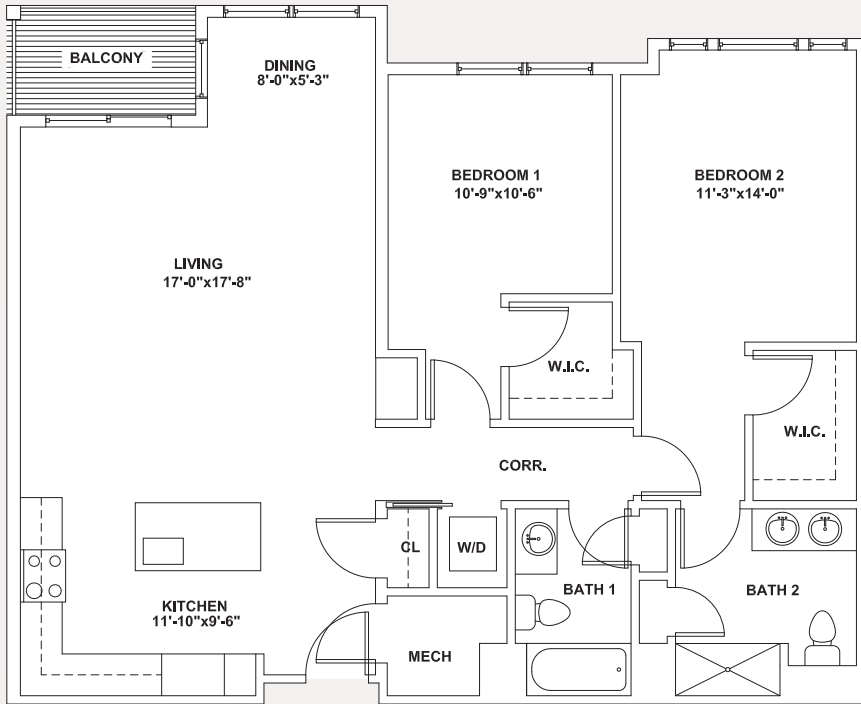


NUMBER OF BEDROOMS	2
NUMBER OF BATHS	2
UNIT SIZE	1,180 SQ. FT.
UNIT NUMBERS	203, 205, 210, 211, 212, 213, 303, 305, 310, 311, 312, 313, 403, 405, 410, 411, 412, 413



BUILDING AND UNIT SPECIFICATIONS

KITCHEN/DINING ROOM

- » Open floor plan
- » Cabinets – semi-custom cabinets designed and installed by a local cabinet company
- » Countertops – quartz
- » Kitchen sink – stainless steel undermount
- » Sink faucet – single handle spray faucet
- » Stove – KitchenAid/Bosch gas self-cleaning stainless steel slide-in
- » Dishwasher – KitchenAid/Bosch stainless steel with hidden controls
- » Microwave – KitchenAid/Bosch stainless slide in with one touch options sensor cooking feature and convection option
- » Hood – stainless steel chimney style
- » Flooring – engineered synthetic hardwood

- » Trim – oversized window, door and base moldings with crown molding at ceiling
- » Lighting – recessed and switch controlled outlets
- » Allowances available if you prefer to choose your own finishes

LIVING ROOM

- » Open floor plan
- » Gas fireplace (optional)
- » Flooring – engineered synthetic hardwood
- » Trim – oversized window, door and base moldings with crown molding at ceiling
- » Lighting – recessed and switch controlled outlets
- » Cable and phone jacks

MASTER BEDROOM

- » Walk-in or oversized closet with expansive shelving
- » Flooring – carpet (hardwood optional)
- » Lighting – recessed and switch controlled outlets
- » Cable and phone jacks

MASTER BATH

- » Vanity – semi-custom cabinets designed and installed by a local cabinet company
- » Vanity top – quartz with undermount porcelain sink
- » Sink faucet – widespread levers
- » Shower – oversized custom tiled walls
- » Shower/tub valve – single lever control
- » Flooring – ceramic tile
- » Toilet – elongated bowl with water-save option
- » Lighting – wall mount vanity lights
- » Venting – fan to exterior
- » Allowances available if you prefer to choose your own finishes

ADDITIONAL BEDROOM

- » Walk-in or oversized closet with expansive shelving
- » Flooring – carpet (hardwood optional)
- » Cable and phone jacks

LAUNDRY AREA

- » Service – dryer: electric
washer: standard water supply and drain
- » Venting – exterior
- » Flooring – one-piece laminate

UTILITY SERVICES AND CONNECTIONS

- » Gas/electric - electric service will be 100 amps and each unit will have an individual circuit breaker panel. Each unit metered separately for electric and gas.
- » Electric - Eversource
- » Gas - Eversource
- » Water - Town of Plymouth
- » Sewer - Town of Plymouth

INTERIOR CEILINGS, WALLS, TRIM AND FINISHES

- » Sound assembly (demising walls) – oversized framing, rock wool resilient channel and double layer gypsum board
- » Ceilings/walls – gypsum board with smooth finish (textured closets).
- » Interior Trim – wood blend baseboard, door and window trim
- » Doors – solid core flush doors at interior, fire-rated stair and unit entry doors

OFFICE/DEN

- » Carpeted

ADDITIONAL BATHROOMS

- » Vanity – semi-custom cabinets designed and installed by a local cabinet company
- » Vanity top – quartz or solid surface with undermount porcelain sink
- » Sink faucet – widespread levers
- » Tub – one-piece fiberglass unit with built in shelves
- » Shower/tub valve – single lever control
- » Flooring – ceramic tile
- » Toilet – elongated bowl with water-save option
- » Lighting – wall mount vanity lights
- » Venting – fan to exterior
- » Allowances available if you prefer to choose your own finishes

HVAC

- » The heating and cooling for each unit is provided by a system composed of three parts:
 - » Gas-fired 96% efficient boiler/water heater, vertical fan coil unit and a dedicated A/C condenser. Heating or cooling is produced by sending hot or cold water/refrigerant through the air handler coil. The air handler moves air (hot or cold as required) over the coil distributing it throughout the dwelling via ductwork. The boiler/water heater provides both domestic hot water and heat therefore reducing the energy consumption.

CONSTRUCTION

- » Foundation/garage – poured 12” reinforced concrete
- » Frame – conventional wood and engineered structural members
- » Siding – vinyl, composite and natural materials
- » Balconies – composite decks and railings
- » Roof – asphalt and rubber membrane

GROUNDS

- » Landscaping – landscape architect designed drought resistant plantings
- » Walkways/patios – stamped concrete and pavers
- » Irrigation – onsite private well